

3329

RELAY VALVE



Putting You In Control.

The Kobelt 3329 provides accurate pressure regulation for large air consumers such as tension brakes, clutches and air cylinders. Featuring a large diaphragm to sense pilot pressure, this valve has lower hysteresis than designs using slip seals. The 3329-EPB version features a safety bypass port with failsafe functionality in the event of a power failure.



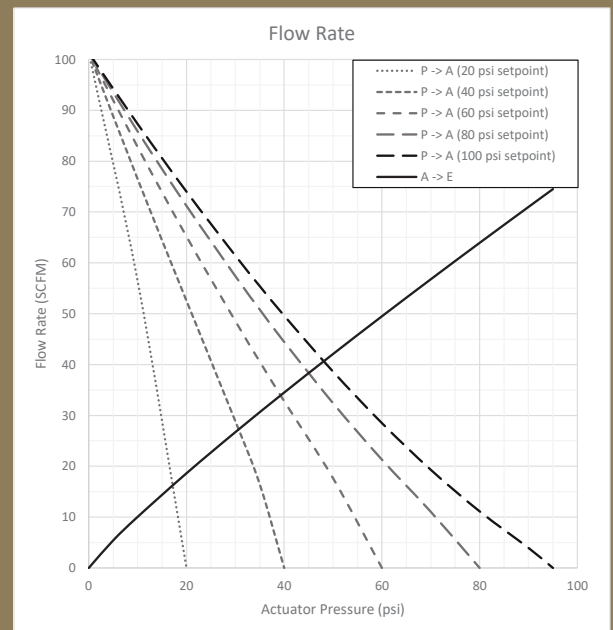
Specifications

- Maximum supply pressure: 150 psi [10.3 bar]
- Minimum pilot pressure: 5 psi [.3 bar]
- Pressure output: 0-100 psi [0-6.9 bar]
- Hysteresis: 1.9 psi [.13 bar]
- Non-linearity: 2.7 psi [.19 bar]
- Flow rate¹: 100 SCFM [2832 Lpm]
- Port sizes: 3/4 NPT
- Ambient temperature: -40°F... +140°F [-40 °C... + 60 °C]
- Weight: 9.4 lbs [4.3 kg]

¹ In system (includes plumbing)

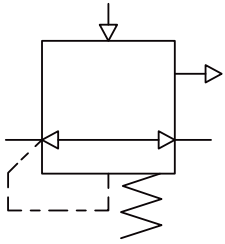
Key Benefits

- Low hysteresis
- High flow
- Fast response
- Safety functionality

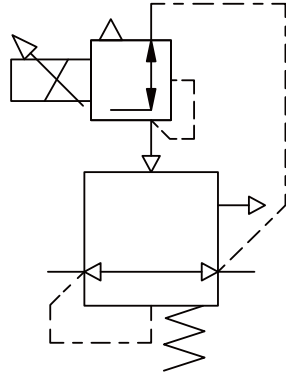


SPECIFICATIONS

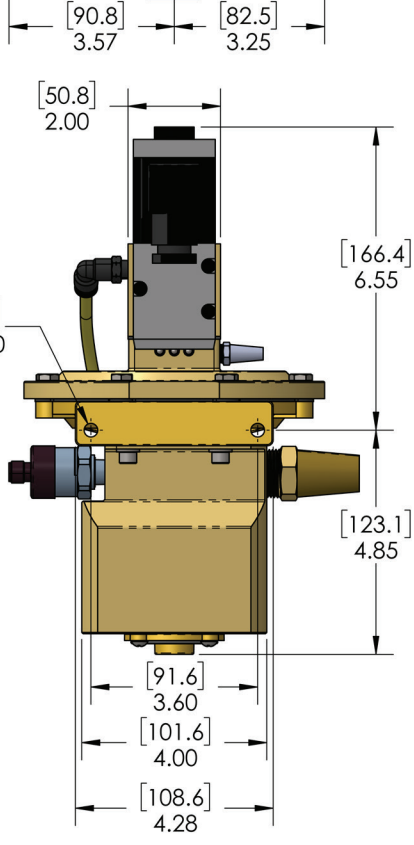
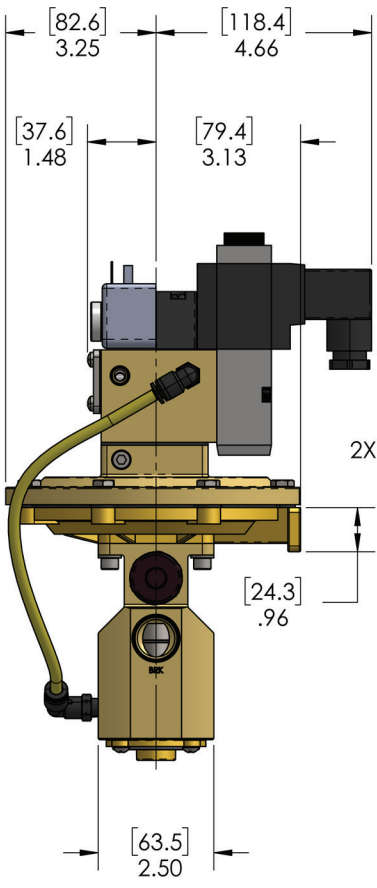
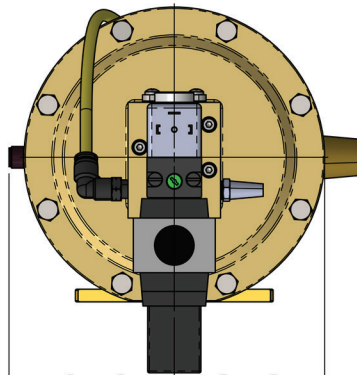
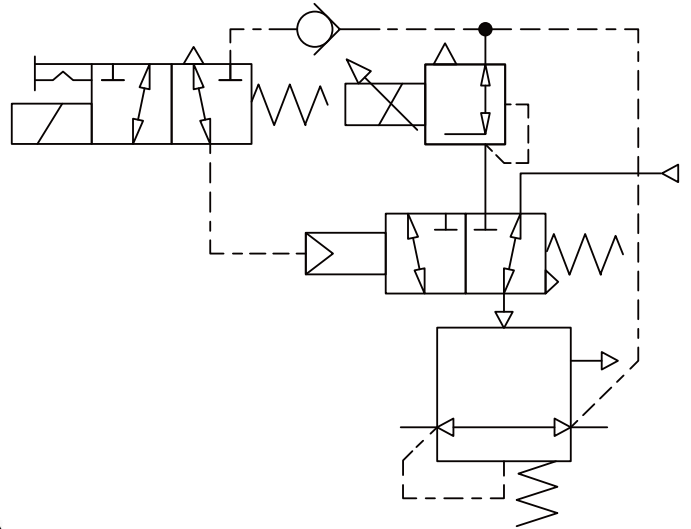
3329



3329-E



3329-EPB



Model Code Key

3329 - □

Configuration Options

- (blank) = remote pilot source
- E = electro-proportional
- P = with pressure feedback
- B = with emergency bypass