



MODEL 2554 DUAL-FUNCTION CONTROL HEAD 1/8" NPT

The 2554 control head was derived from our model 2544. Their basic functions are the same. All components with the exception of the dome and handle are identical. The most common use for this model is to control the main propulsion engines in ships. It is also used to control direction and speed on winches.

After the first 20° of handle travel, one of the 3-way valves will open and engage the clutch. Further movement of the handle will cause the throttle valve to increase the output pressure from idle to full RPM. The pressure settings are adjustable. Various springs are also available to provide different pressure ranges.

Weight: 9 lb. (4.1 kg)
Materials: Die cast silicon bronze and stainless steel
Operating Temp. Range: -40°C to +90°C
Pipe Port Size: 1/8" N.P.T.
Maximum Supply Pressure: 150 psi (10.3 bar)

APPLICATIONS

- Used principally for the control of throttles or governors and reverse clutches by a single handle
- For pneumatic control of two mechanisms, one directional and the other proportional, by a single handle

ORDERING INFORMATION

Model Designations:

- C - One short handle (standard)
- D - One long handles
- E - Spring return handle
- H - With chrome finish dome and handles
- J - With polished brass finish dome and handles
- K - With black epoxy finish dome and chrome handle
- N - 0 – 60 psi
- P - 0 – 80 psi
- R - 0 – 100 psi
- S - 0 – 120 psi
- T - 10 – 60 psi
- U - 10 – 80 psi
- W - 10 – 100 psi
- X - 10 – 120 psi

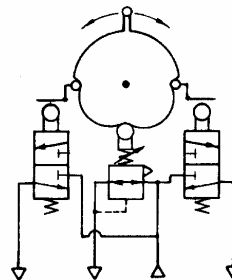
The standard model 2554 Control Head is supplied as:

- i. long handle (-D)
- ii. with black epoxy finish dome and chrome handle (-K)
- iii. in any standard pressure range

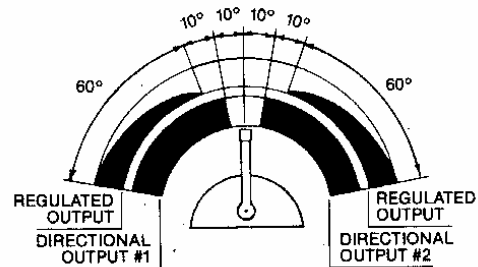
To order, state Model number followed by the desired Designation letter codes (must specify pressure range):
Example: 2554-DKU is for standard 2554 with 10-80 psi pressure range.

Other pressure ranges are available upon request.

SCHEMATIC SYMBOL

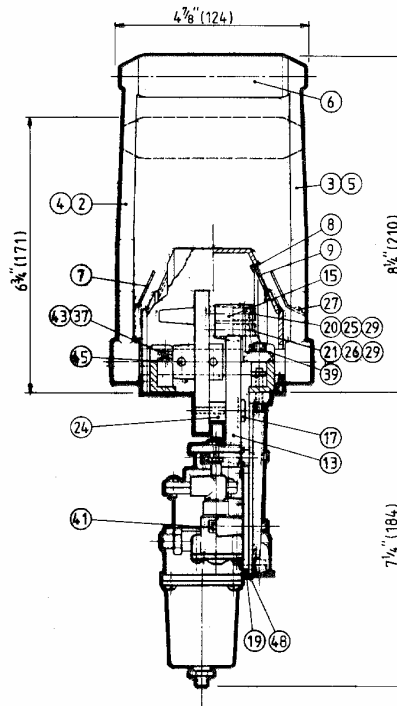
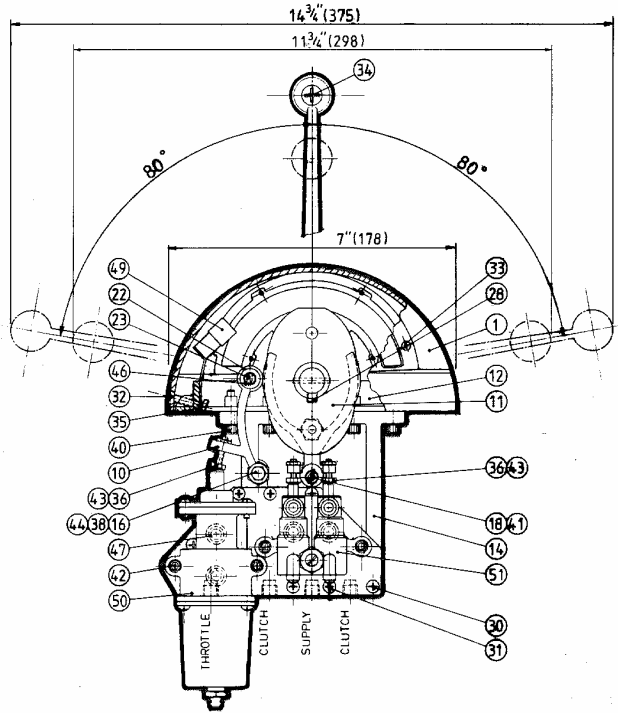


OUTPUT PRESSURE VS LEVER TRAVEL

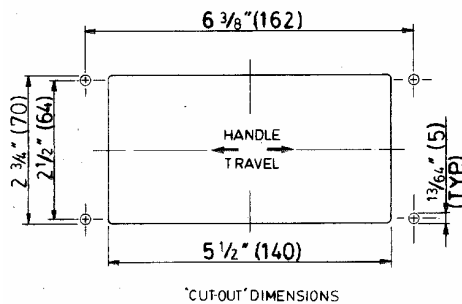


DIMENSIONS AND PARTS LIST MODEL 2554

Item	Quantity	Part Number	Description
1	1	2553-0001	Dome
2	1	2553-0002	Handle (long)
3	1	2553-0003	Handle (long)
4	1	2553-0007	Handle (short)
5	1	2553-0008	Handle (short)
6	1	2553-0020	Handle Grip
7	2	2553-0018	Fpointer
8	2	2553-0006	Scale Retainer
9	1	2553-0014	Scale L.H.
9	1	2553-0015	Scale R.H.
10	1	2545-0001	Roller Arm
11	1	2545-0003	Cam
12	1	2543-0002	Frame
13	1	2545-0008	"Fork" Cam
14	1	2544-0001	Support
15	1	2542-0009	Bracket
16	1	2545-0002	Spacer
17	1	2544-0005	Shoulder Bolt
18	1	2544-0007	Bushing
19	1	2544-0003	Plate
20	1	2545-0012	Detent Pin
21	1	2545-0021	Friction Plug
22	1	2543-0009	Roller
23	1	2542-0011	Snap Ring Pin
24	1	2544-0004	Roller
25	1	1201-0062	Detent Spring
26	1	1201-0002	Friction Spring
27	2	1006-0604	Pan Hd. Screw
28	1	1016-1004	Setscrew
29	2	1016-1205	Setscrew
30	5	1010-0806	Round Hd. Screw
31	3	1009-0806	Flat Hd. Screw
32	2	1005-0808	Oval Hd. Screw
33	16	1011-0406	Oval Hd. Screw
34	2	1011-1016	Oval Hd. Screw
35	2	1001-0804	Hex Hd. Screw
36	3	1001-0808	Hex Hd. Screw
37	2	1001-0812	Hex Hd. Screw
38	1	1001-1028	Hex Hd. Screw
39	2	1002-1008	Socket Hd Screw
40	4	1002-1010	Socket Hd Screw
41	3	1002-1020	Socket Hd Screw
42	2	1002-1024	Socket Hd Screw
43	5	1022-0108	Nut
44	2	1023-0232	Flat Washer
45	2	1024-0816	Spring Pin
46	2	1029-1031	Snap Ring
47	5	1101-0010	"O" Ring
48	1	2544-0008	Gasket
49	2	6001-0206	Light Socket
50	1	3217	Pressure Regulating Valve
51	1	3803-A	Four way Valve



A Repair Kit 2554-RK comprising all seals and gaskets is available on order.



All Dimensions in inches (mm)